

DC-Magnetic Encoder

Features:
16 cycles per revolution
2 channels
Digital output

Series ME2-16

		ME2-16	
Signal output, square wave		2	channels
Supply voltage	V _{cc}	3.3 to 18	VDC
Current consumption, typical (V _{cc} = 5 V DC)	I _{cc}	7.5	mA
Pulse width	P	180 ± 45°	°e
Phase shift, channel A to B	Φ	90° ± 45°	°e
Logic state width	S	90° ± 45°	°e
Cycle	C	360° ± 30°	°e
Signal rise/fall time, typical	tr/tf	110 / 55 (C _L =10pf)	nsec
Frequency range ⁽¹⁾	f	15	kHz
Inertia of code disk	J	0.019	gcm ²
Operating temperature range		- 40 to + 85	°C

⁽¹⁾ Velocity (rpm) = f (Hz) x 60/N

Ordering information

Encoder type	number of channels	cycles per revolution	in combination with DC Micromotor Series
ME2-16	2	16	MD1622E MD2230 M2232U..GS050 M2232U..CS050

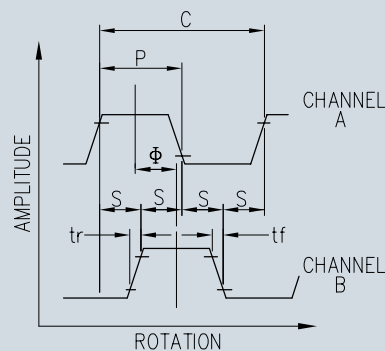
Features

These incremental shaft encoders in combination with the Micro-Drives DC-Micromotors are designed for indication and control of both shaft velocity and direction of rotation as well as for positioning.

Solid state Hall sensors and a low inertia magnetic disc provide two channels with 90° phase shift.

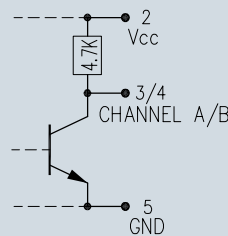
The supply voltage for the encoder and the DC-Micromotor as well as the two channel output signals are interfaced with a 150 mm ribbon cable and a 6-pin connector.

Output signals / Circuit diagram / Connector information

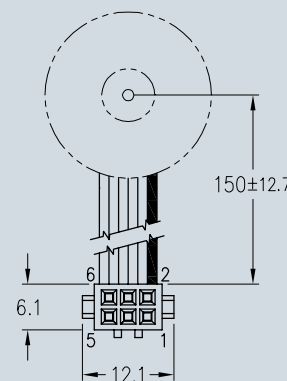


OUTPUT SIGNALS

with clockwise rotation as seen from the shaft end



OUTPUT CIRCUIT



PIN FUNCTION

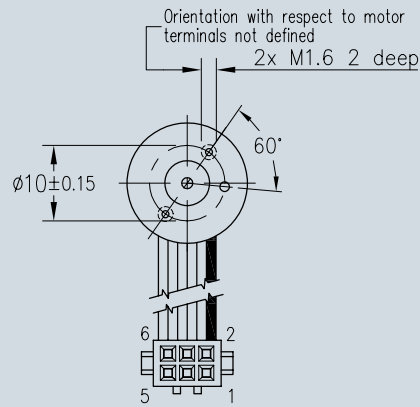
- 1 Motor-
- 2 Motor+
- 3 GND
- 4 Vcc
- 5 Channel B
- 6 Channel A

STANDARD CONNECTOR (6P)

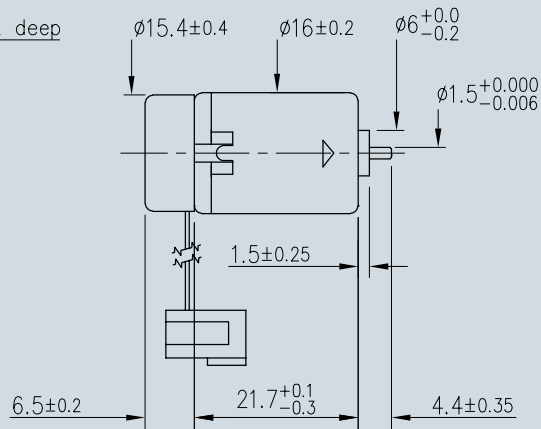
Berg: FCI 71600-106LF
Polarized
.050" Ribbon Cable PVC
6 conductors 28AWG
Mating Connector:
Header: FCI 75869-131

Series Encoder ME2-16

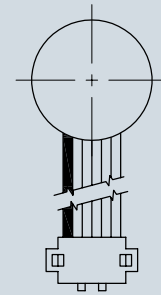
Encoder ME2-16 with motor MD1622E



Front View



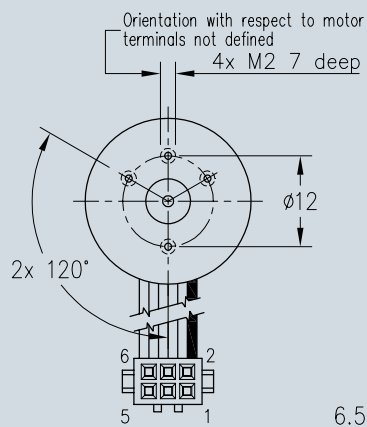
ME2-16 + MD1622E



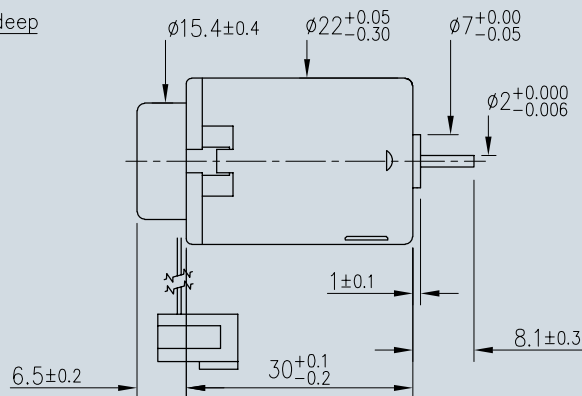
Rear View



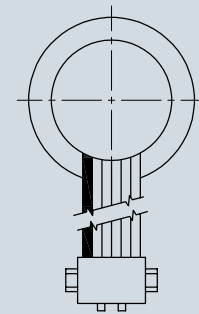
Encoder ME2-16 with motor MD2230



Front View



ME2-16 + MD2230

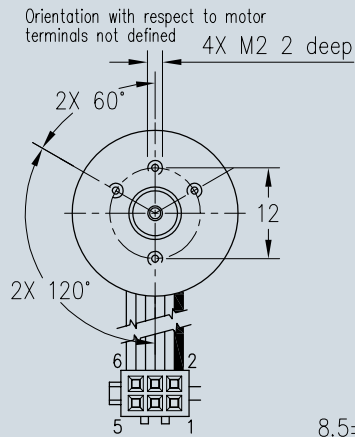


Rear View

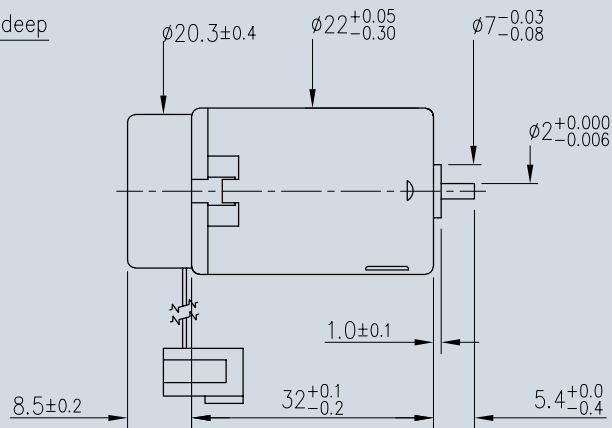


Series Encoder ME2-16

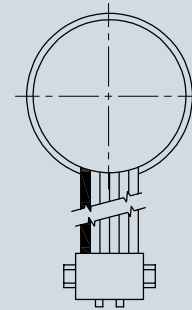
Encoder ME2-16 with motor M2232U...CS



Front View

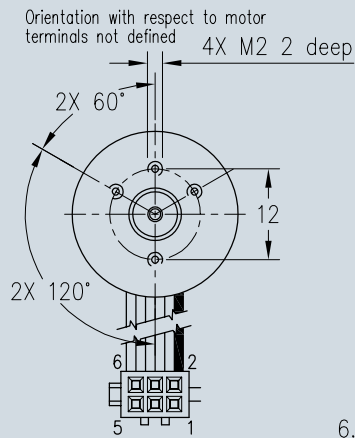


ME2-16 + M2232U...CS

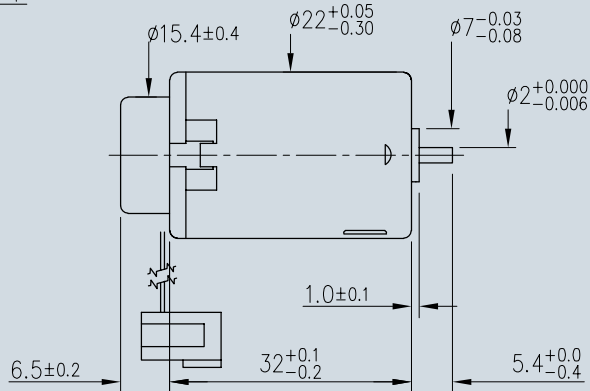


Rear View

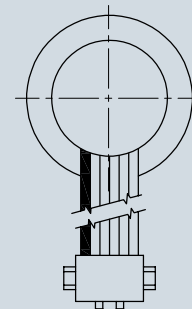
Encoder ME2-16 with motor M2232...GS



Front View



ME2-16 + M2232U...GS



Rear View