

Spur Gearheads

425 oz-in

Motor and Gearhead combinations:
G4 fits motor series GNM2130 & GNM2145

Series G4

		G4
Housing material		metal
Backlash, at no-load		≤ 2.5°
Shaft load, max.:		
– radial	oz	72
– axial	oz	0

Series G4 with Motor Series GNM 2130

reduction ratio	weight without motor		length with motor GNM 2130		output torque				direction of rotation (reversible)	efficiency %
	Kg	oz	mm	in	continuous operation		intermittent operation			
					M max.	M max.	M max.	M max.		
					Nm	oz-in	Nm	oz-in		
60:1	0.73	25.6	123	4.84	0.7	99.1	1.2	169.9		70
90:1	0.73	25.6	123	4.84	1.0	141.6	1.8	254.9		70
120:1	0.73	25.6	123	4.84	1.3	184.1	2.3	325.7		65
135:1	0.73	25.6	123	4.84	1.5	212.4	2.6	368.2		65
180:1	0.73	25.6	123	4.84	1.5	212.4	2.6	368.2		65
240:1	0.73	25.6	137	5.39	2.0	283.2	3.0	424.8		60
270:1	0.73	25.6	123	4.84	2.0	283.2	3.0	424.8		60
360:1	0.73	25.6	137	5.39	2.0	283.2	3.0	424.8		60
405:1	0.73	25.6	123	4.84	2.2	311.6	3.0	424.8		60
480:1	0.73	25.6	137	5.39	2.2	311.6	3.0	424.8		50
540:1	0.73	25.6	137	5.39	2.2	311.6	3.0	424.8		55
720:1	0.73	25.6	137	5.39	2.2	311.6	3.0	424.8		50
810:1	0.73	25.6	137	5.39	2.2	311.6	3.0	424.8		55
960:1	0.73	25.6	137	5.39	2.2	311.6	3.0	424.8		45
1,080:1	0.73	25.6	137	5.39	2.2	311.6	3.0	424.8		45
1,215:1	0.73	25.6	137	5.39	2.2	311.6	3.0	424.8		45
1,440:1	0.73	25.6	137	5.39	2.2	311.6	3.0	424.8		45
1,620:1	0.73	25.6	137	5.39	2.2	311.6	3.0	424.8		45
2,160:1	0.73	25.6	137	5.39	2.2	311.6	3.0	424.8		45
2,430:1	0.73	25.6	137	5.39	2.2	311.6	3.0	424.8		45
3,240:1	0.73	25.6	137	5.39	2.4	339.9	3.0	424.8		45
3,645:1	0.73	25.6	137	5.39	2.4	339.9	3.0	424.8		45
4,320:1	0.73	25.6	137	5.39	2.4	339.9	3.0	424.8		45
4,860:1	0.73	25.6	137	5.39	2.4	339.9	3.0	424.8		40
6,480:1	0.73	25.6	137	5.39	2.4	339.9	3.0	424.8		40
7,290:1	0.73	25.6	137	5.39	2.4	339.9	3.0	424.8		40
8,640:1	0.73	25.6	137	5.39	2.4	339.9	3.0	424.8		40
9,720:1	0.73	25.6	137	5.39	2.4	339.9	3.0	424.8		40
10,935:1	0.73	25.6	137	5.39	2.4	339.9	3.0	424.8		35
12,960:1	0.73	25.6	137	5.39	2.4	339.9	3.0	424.8		35
14,580:1	0.73	25.6	137	5.39	2.4	339.9	3.0	424.8		25
19,440:1	0.73	25.6	137	5.39	2.4	339.9	3.0	424.8		25
29,160:1	0.73	25.6	137	5.39	2.4	339.9	3.0	424.8		20
43,740:1	0.73	25.6	137	5.39	2.4	339.9	3.0	424.8		20

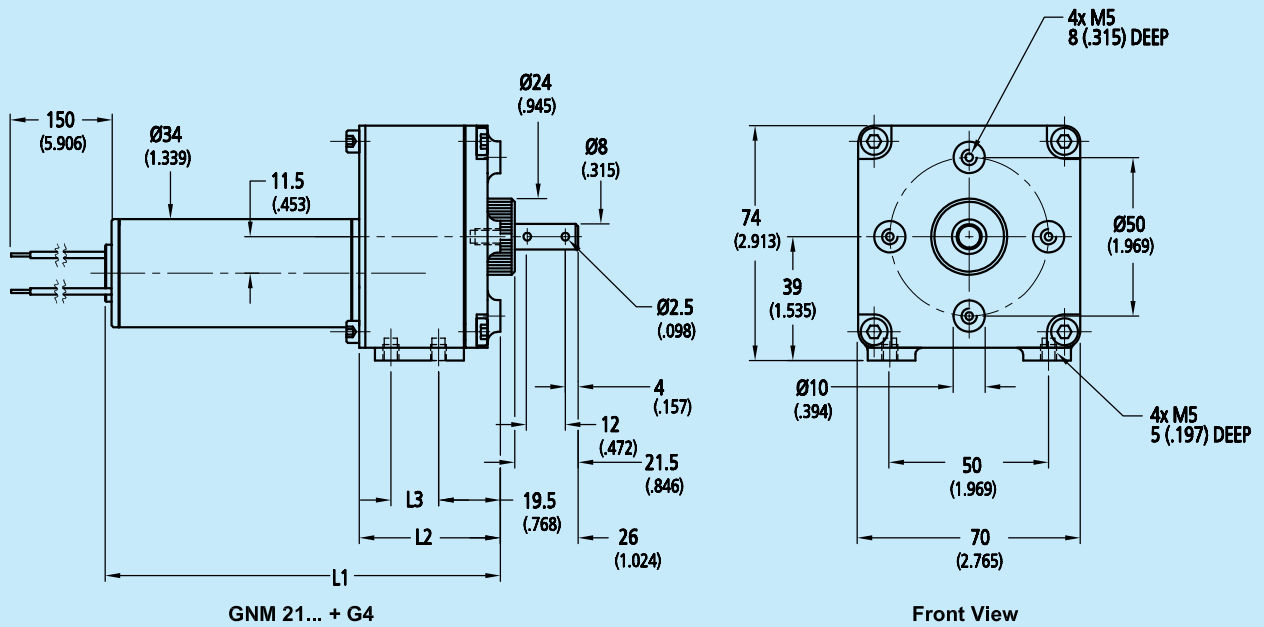
Series G4 with Motor Series GNM 2145

reduction ratio	weight without motor		length with motor GNM 2145		output torque				direction of rotation (reversible)	efficiency %
	Kg	oz	mm	in	continuous operation		intermittent operation			
					M max.	M max.	M max.	M max.		
					Nm	oz-in	Nm	oz-in		
15:1	0.75	26.5	138	5.43	0.30	42.48	0.40	56.64		80
30:1	0.75	26.5	138	5.43	0.42	59.48	0.65	92.05		72
45:1	0.75	26.5	138	5.43	0.62	87.80	0.90	127.45		72

For notes on technical data refer to "Technical Information". Specifications subject to change without notice. MWME0306

Series G4

Dimensional outlines for G4 with GNM2130 & GNM2145



MODEL	RATIO	DIMENSIONS - mm (in)		
		L1	L2	L3
2130 + G4:	60:1 - 180:1	123 (4.843)	42.5 (1.673)	15 (.591)
	270:1 - 405:1	123 (4.843)	42.5 (1.673)	15 (.591)
2145 + G4:	240:1 - 360:1	137 (5.394)	56.5 (2.224)	26 (1.024)
	480:1 - 43740:1	137 (5.394)	56.5 (2.224)	26 (1.024)