



SC Programming Board USB
6501.00096
6501.00097

Instruction Manual

EN

Imprint

Version:
1st issue, 04.09.2009

Copyright
by Dr. Fritz Faulhaber GmbH & Co. KG
Daimlerstr. 23/25 · 71101 Schönaich

All rights reserved, including translation rights.
No part of this description may be duplicated,
reproduced, stored in an information system or
processed or transferred in any other form with-
out prior express written permission of Dr. Fritz
Faulhaber GmbH & Co. KG.

This instruction manual has been prepared with
care.

Dr. Fritz Faulhaber GmbH & Co. KG cannot ac-
cept any liability for any errors in this instruction
manual or for the consequences of such errors.
Equally, no liability can be accepted for direct or
consequential damages resulting from improper
use of the equipment.

The pertinent regulations regarding
safety engineering and interference suppression
as well as the specifications in this instruction
manual must be complied with when using the
equipment.

Subject to modifications.

The current version of this instruction manual is
available on FAULHABER's internet site:

www.faulhaber.com

Content

1	Important Information	4
1.1	Symbols used in this instruction manual	4
2	Install Motion Manager 4 Software	5
3	Connect the periphery	6
3.1	Speed Controller	6
3.2	Power supply	6
4	Establish Communication	7
5	Installing the USB Driver	9
5.1	System Requirements	9
5.2	Setup instructions	9
6	Technical Data	11
6.1	Operating Data	11
6.2	Product Layout	11

1 Important Information

This instruction manual describes the installation, configuration and use of the Programming Boards 6501.00096 and 6501.00097 from FAULHABER.

- Please read through the complete instruction manual before using the board.
- Keep this instruction manual in a safe place for later use.
- FAULHABER is not liable for any data loss, damage or other problems which arise due to use of this board.

Standard programming board for configuration and changes of the operating modes for Speed Controller series SC 1801 S / F and SC 2804 S.

- Board 6501.00096 is to be used for Speed Controller series SC2804.
- Board 6501.00097 is to be used for Speed Controller series SC1801.

1.1 Symbols used in this instruction manual

Note

This "Note" pictogram provides tips and recommendations for use and operation.



2 Install Motion Manager 4 Software

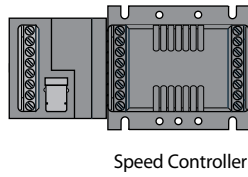
Install the respective current version of the FAULHABER Motion Manager software onto your PC.
It can be downloaded from the FAULHABER internet site: <http://www.faulhaber.com/MotionManager>

The programming board is designed to communicate via an USB interface, therefore you have to install the appropriate driver in addition, following the installation instruction described in [chapter 5](#).

3 Connect the periphery

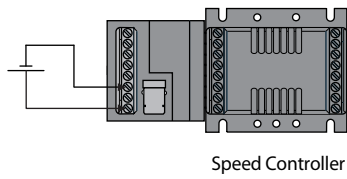
3.1 Speed Controller

Connect your Speed Controller to the multi-pin connector on the right side.



3.2 Power supply

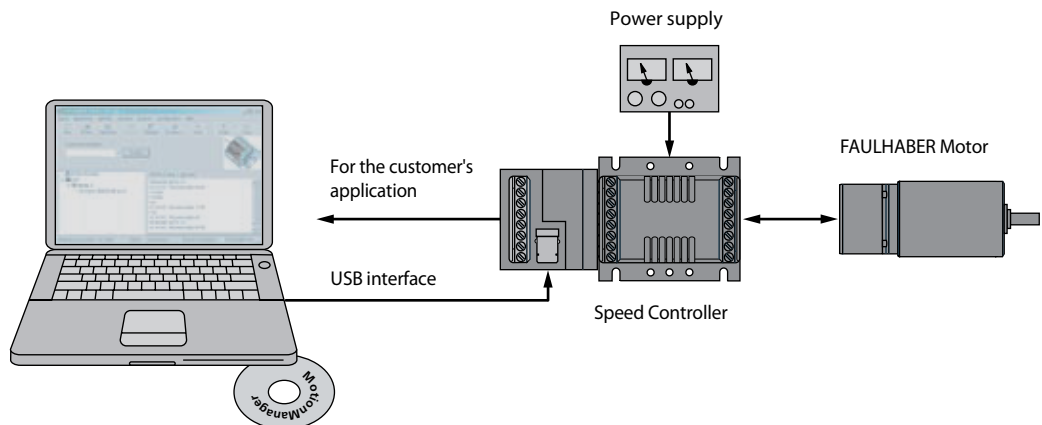
Connect the power supply to Up and GND of the screwing terminal on the left side.



Note



The programming board USB can also be connected directly between the application side and the speed controller.



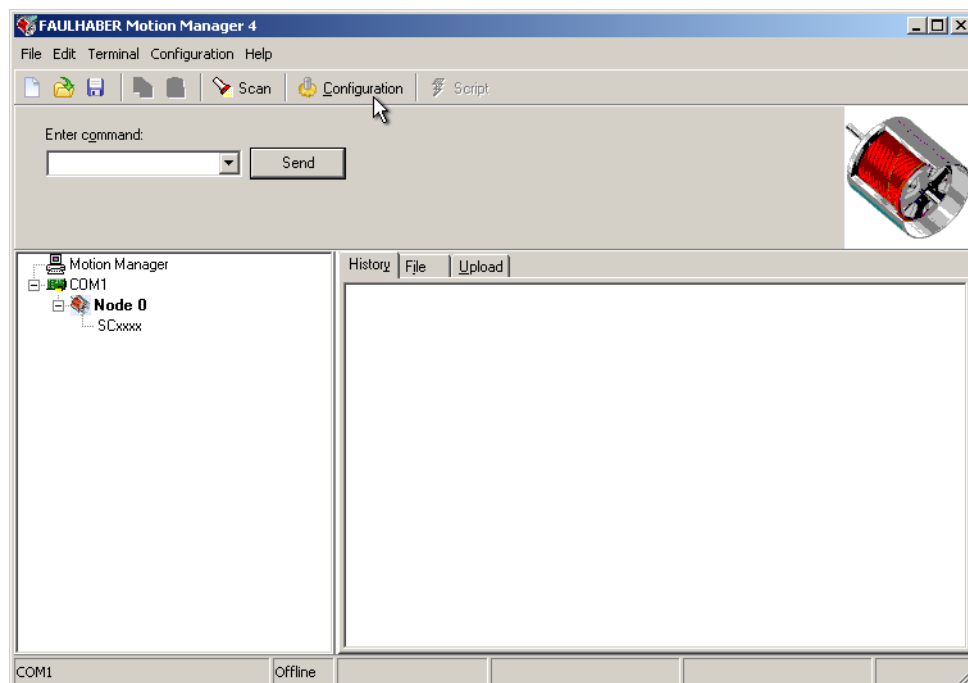
4 Establish Communication

Open the Motion Manager program and configure the software:

1. Choose the controller type "Speedcontroller without command interface" from the connection wizard and select the USB Port and the baud rate.

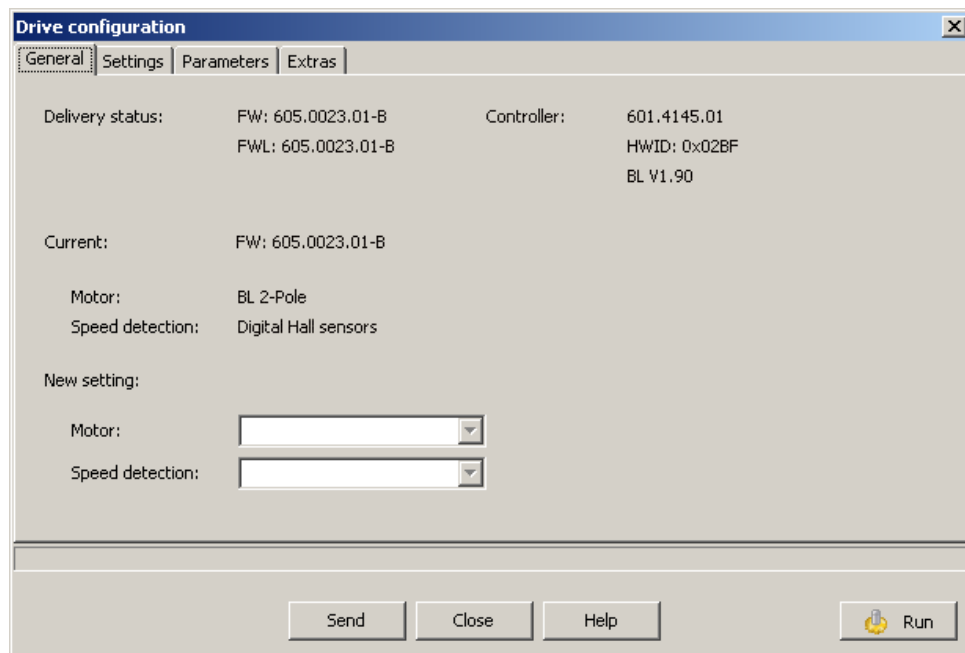
If the wizard doesn't appear, click the "help" tab and select "Getting started".

2. Click the "Configuration" tab in Motion Manager program



4 Establish Communication

3. Now settings and parameters can be configured.



The changes are transferred to the Speed Controller by using the button "Send". By using the button "Run" the communication to the PC is disconnected and the Speed Controller is activated.

The "Run" button changes to "Stop". By pressing this button again you'll return to config mode.

Note



For detailed descriptions of all parameters and settings see the instruction manual of the speed controller.

5 Installing the USB Driver

5.1 System Requirements

- PC running Microsoft Windows 2000, XP or Vista 32 bit edition (Vista 64 bit edition is **not** supported).
- A free USB 1.1 or 2.0 connector.
- 10 MB hard disk space.

The “USBX driver for Faulhaber BRC Adapter” is used to operate the programming board via the USB interface.

This driver is included in the setup package of FAULHABER Motion Manager Version 4.2 or higher and can be installed from the installation directory after connecting the adapter.

5.2 Setup instructions

- 1) Connect the programming board with a standard USB cable type B to the PC.
- 2) Connect the power supply to Up and GND.

Note



The maximum voltage of Up depends on the speed controller, the minimum voltage is 5 V.

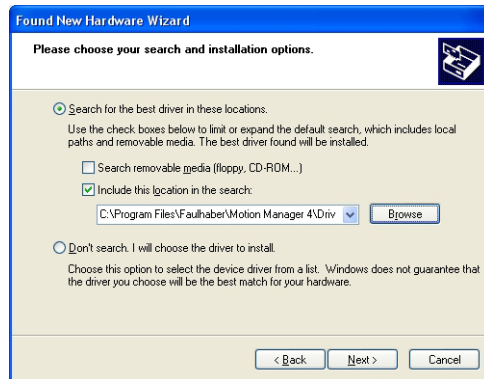
- 3) A new hardware will be found; XP and Vista offer you at this point to connect to the Windows Update Server; don't connect this time, and continue the installation.
- 4) Select “Install from a list or a specific location” on the next wizard panel.



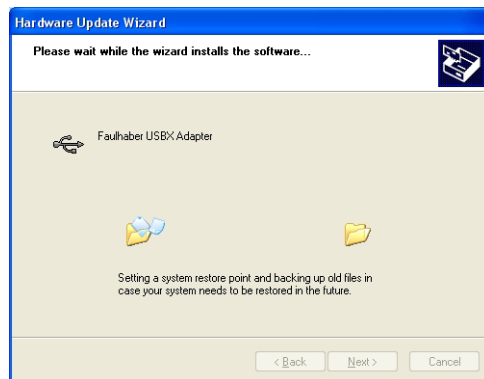
5 Installing the USB Driver

5.2 Setup instructions

- 5) Select „Include this location in the search“ and browse to the „Drivers\USBX“ subdirectory in the Motion Manager installation directory.



- 6) The driver will be installed.



- 7) When the installation is complete, click "Finish". (The installation may take a few minutes to complete.)



- 8) Now you can use the programming board with Motion Manager.

6 Technical Data

6.1 Operating Data

6501.00096 and 6501.00097			
Power supply for electronics	U_{elo}	5 ... 30	V
Power supply for motor	U_{mot}	0 ... 30	V
Current consumption of electronics	I_{el}	20	mA
Temperature range:			
- Operating temperature		0 ... +65	°C
Dimensions and weight:			
- Dimensions (L x W x H)		55 x 48 x 18	mm
- Weight		35	g

6.2 Product Layout

